



biotome
PRECISION DIAGNOSTICS

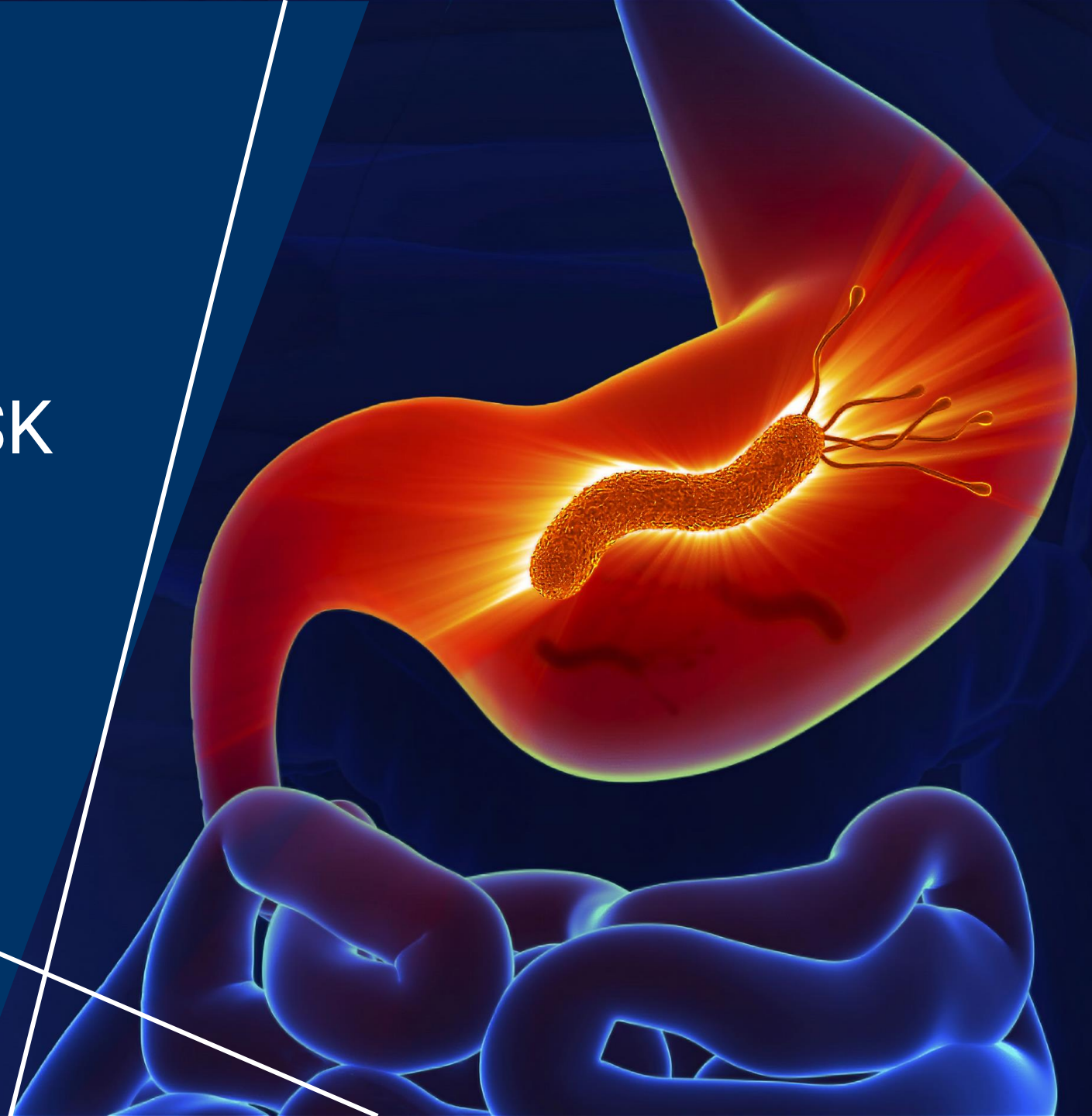
NEXT GENERATION ANTIBODY DIAGNOSTICS

HELITOPE[®]

DIAGNOSTIC FOR
GASTRIC CANCER RISK



biotome
PRECISION DIAGNOSTICS



The Biotome team



Samuel Lundin

Director / CEO
Immunology,
Professor of Biomedicine



Alma Fulurija

Director
Immunology, Biotech,
Clinical development



Henrik Lundin

Chair
Head of Corporate governance,
H&M group (HMB:SS)



Carel Smit

Director
IP Strategist,
MedTech & AgTech



Luke Marshall

Head of Business Development
MedTech, Oil exploration,
Bioinformatics, Computing



Barry Marshall

Advisor
Nobel Laureate
Medicine 2005

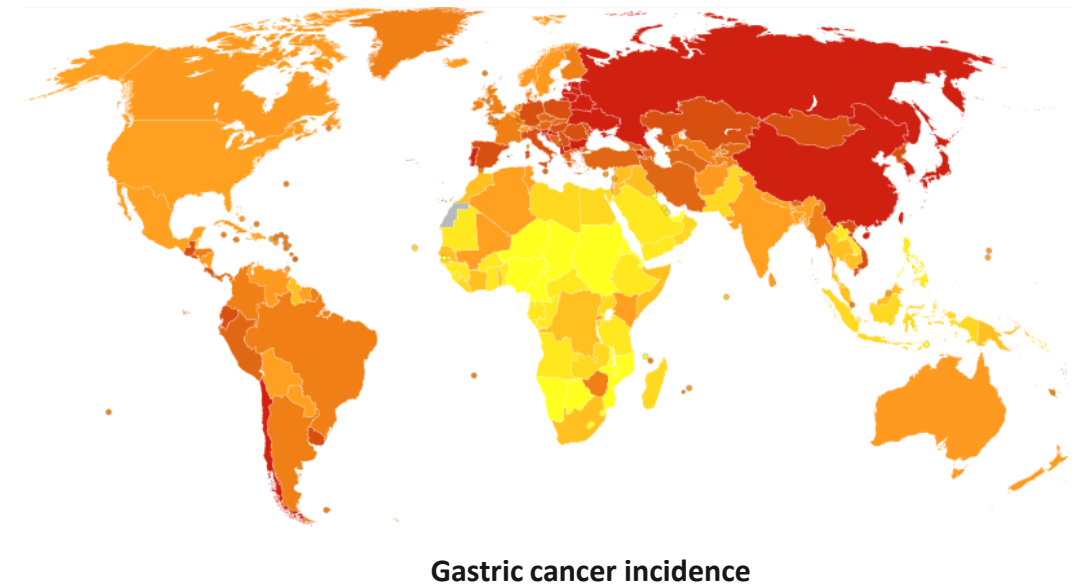
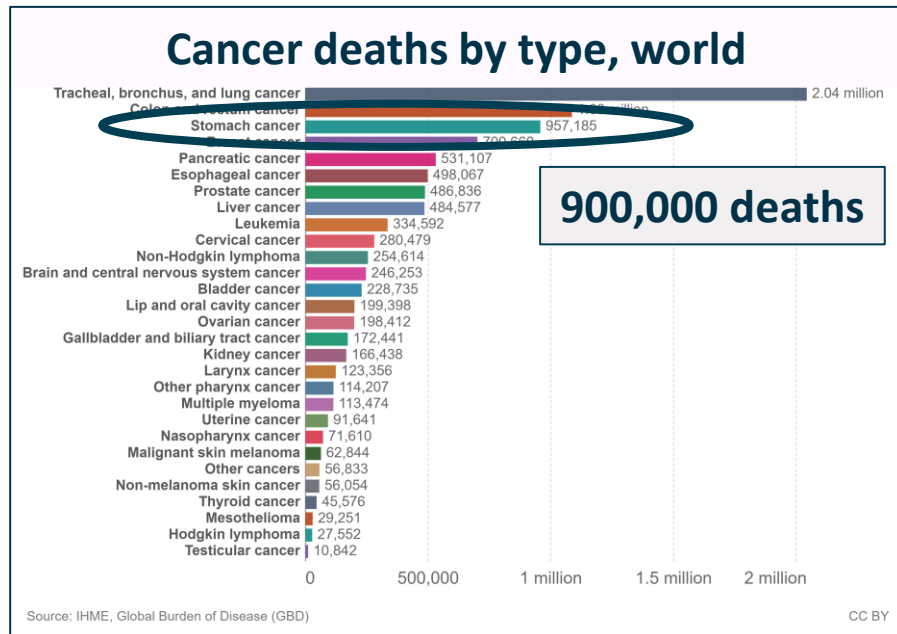


Liz Dallimore

Advisor
Managing Director,
Argenica (ASX:AGN)

Gastric Cancer: A Preventable Problem

- 1.3 M cases – 5-year survival 35%
- 90% associated with *Helicobacter pylori* infection
- Antibiotic treatment of *H. pylori* **prevents** cancer development



Helitope – screening for high-risk *H. pylori*

H. pylori infection:

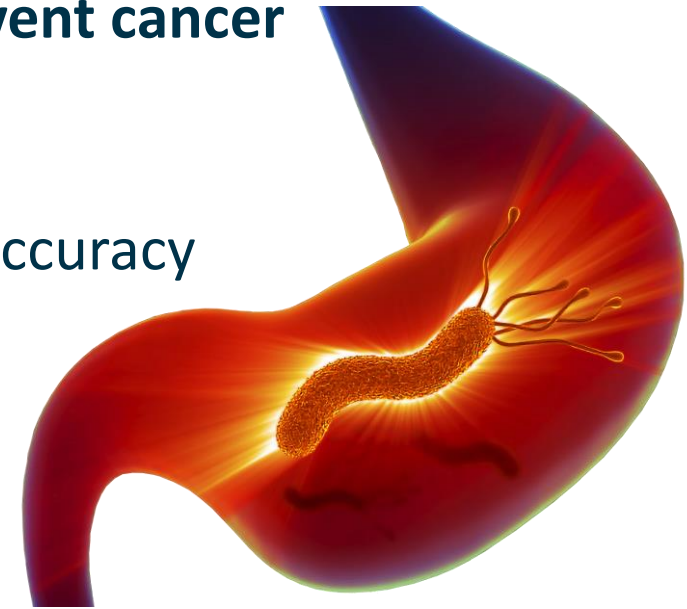
- Half the world is infected, and most infected **don't have any symptoms**
- **Not all *H. pylori*** are dangerous: variants carrying the CagA protein are **high-risk**
- **No approved diagnostic** differentiate between low-risk and high-risk infections

Opportunity:

- Screening to **identify high-risk *H. pylori***, **treat** infection and **prevent cancer**

Helitope:

- Detects antibodies to the **carcinogenic CagA protein** with high accuracy
- **Simple and inexpensive blood test** suitable for screening

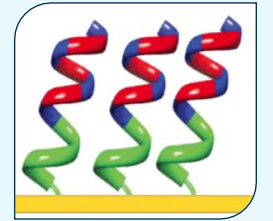


BIOTOME

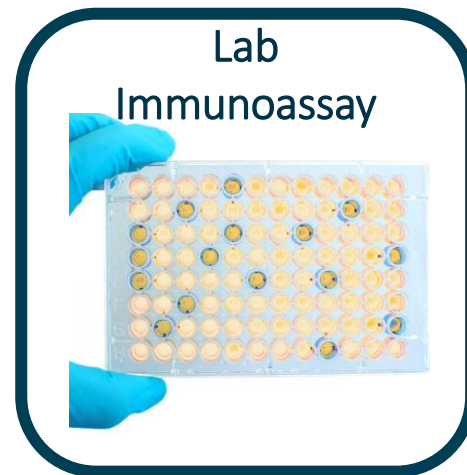
DISEASE DIAGNOSIS
RISK IDENTIFICATION



Next-generation serology diagnostics



- Peptides as markers: **high accuracy**
- Diagnostic peptides can be **patented**
 - Helitope, patents granted: US, SE, JP, AU
 - Pending: CN, KR, SG, Europe
- Adaptable to multiple existing diagnostic platforms



Health-Economics and Impact of Helitope

“The most effective treatment for cancer is prevention.”

Screen-and-treat programs could prevent 50-70% of gastric cancer cases

- Europe: 53 000 lives and €3.3B saved
- Globally: 450 000 lives

Health-economy model (AU)

Cost per Disability-adjusted life year (DALY) averted:

- **\$11,000**

WHO highly-cost effective threshold: \$75,000

Stage of Development

Helitope

Accomplished

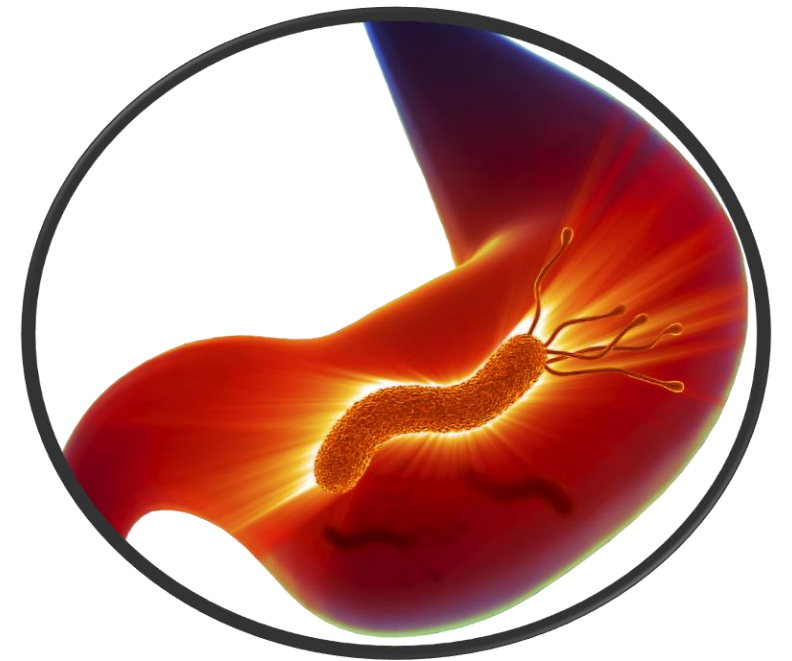
- Peptide markers identified and patented
- Proof-of-concept benchtop prototype
- Clinical trial strategy and partner identified

Upcoming milestones

- Manufacturing partner (Q2 2023)
- Research-Use-Only manufacture (Q4 2023)
- Clinical trial (2024) and regulatory filing (Q2 25)

Summary

- Biotome is pioneering a **new approach to antibody diagnostics** – accurate, patentable and adaptable
- Helitope: next-generation serology test for **gastric cancer screening and prevention** – a Helitope screening program would be highly cost-effective and could prevent most cases of gastric cancer



Biotome is seeking additional capital

We're raising seed funding to progress Helitope to IVD approval in Australia

Funding to date

New capital raise

\$810 000

Invested capital

\$3 000 000

in equity funding

\$3 900 000

Non-diluting Grants

\$250 000

Revenue



biotome
PRECISION DIAGNOSTICS

NEXT GENERATION ANTIBODY DIAGNOSTICS